

 BAU 2023 Alumil

**INNOVATIVE ARCHITECTURAL
ALUMINIUM SYSTEMS**

Booth Guide

Welcome to ALUMIL's booth!

Our mission is to improve people's quality of life through advanced aluminium systems that enhance the performance of buildings by making them more functional, safer, and energy efficient. Our years of experience in undertaking iconic projects around the world allow us to meet the needs of the most demanding projects, providing certified systems of exceptional quality, top performance, and high aesthetics.

We remain committed to our mission, and based on our high level of expertise, we have created a wide range of new innovative products, which you can discover at our impressive 288 sq.m. booth designed especially for the "BAU 2023" trade fair.

At ALUMIL, apart from developing reliable and sophisticated products for any type of building, we put at the forefront of our strategy the protection of the environment. Therefore, we have adopted sustainable development and circular economy practices in our production, increasing the amount of recycled, "green" aluminium in it. We seek to pass the spirit of sustainability to our partners and those who are part of the large ALUMIL family, encouraging them to join us in the magnificent journey towards a more sustainable world.

We are pioneers because we create innovative aluminium systems, build solid, trusting relationships with our partners, and dream of a prosperous next chapter for our planet, focusing on people and nature.

The highlights of our presence in BAU 2023

- **The top systems of ALUMIL's wide product range**

From hinged, sliding, and curtain wall systems to folding or entrance doors and outdoor solutions, the... “dream team” of the company's most innovative products will be showcased.

- **Architectural Aluminium Academy**

ALUMIL is a crucial part of AAA, the Innovation and Skills Development Center for the aluminium field. The Center collaborates with two of the most important universities in Greece and technology companies, providing Training and Educational programs designed for aluminium fabricators. In addition, it offers Business Consulting services.

- **ALUMIL Experts**

Our experienced consultants will guide you through our booth and will be ready to answer any questions regarding our products and services.

Have a nice tour!



Where to find us

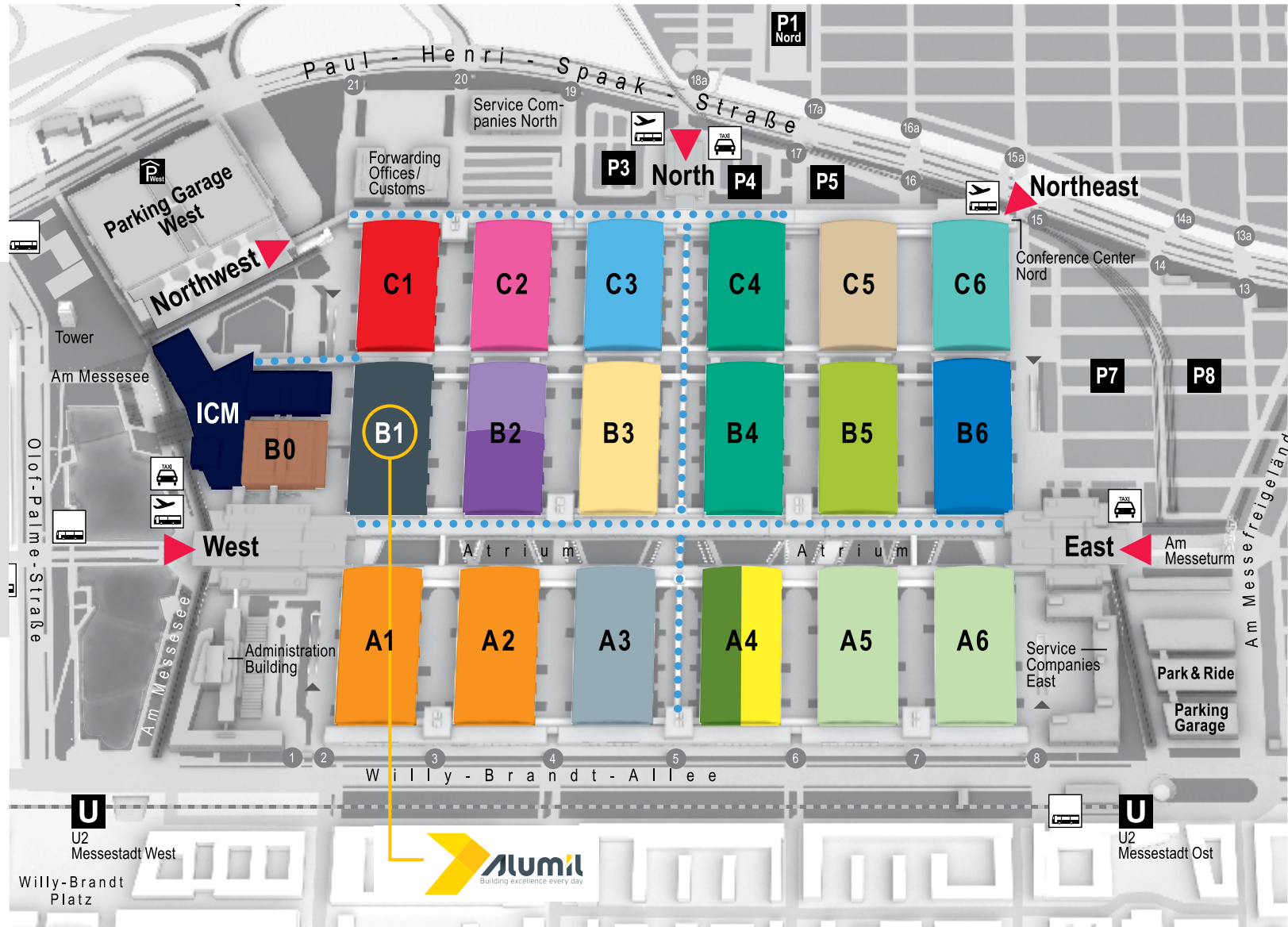


April 17–22 • Munich

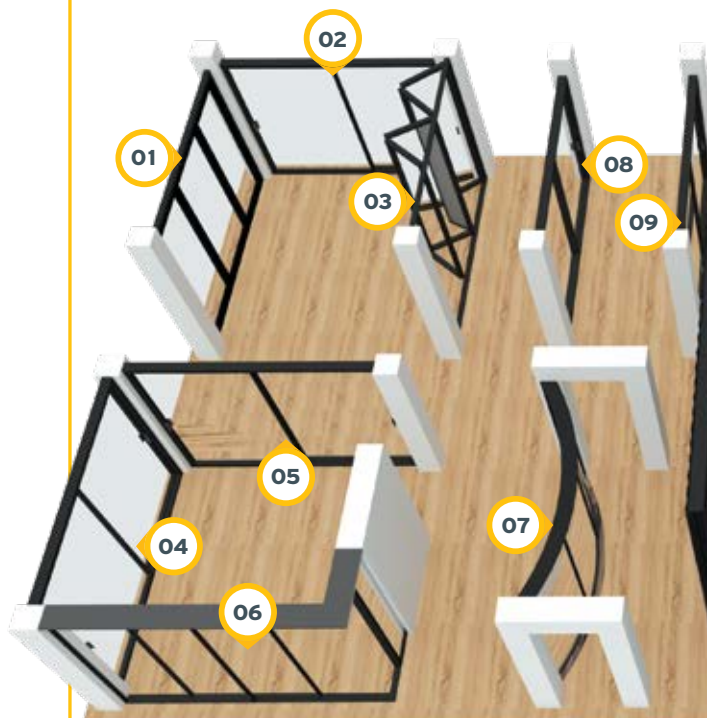
World's Leading Trade Fair for
Architecture, Materials, Systems

bau-muenchen.com

Hall **B1** | Booth **338**



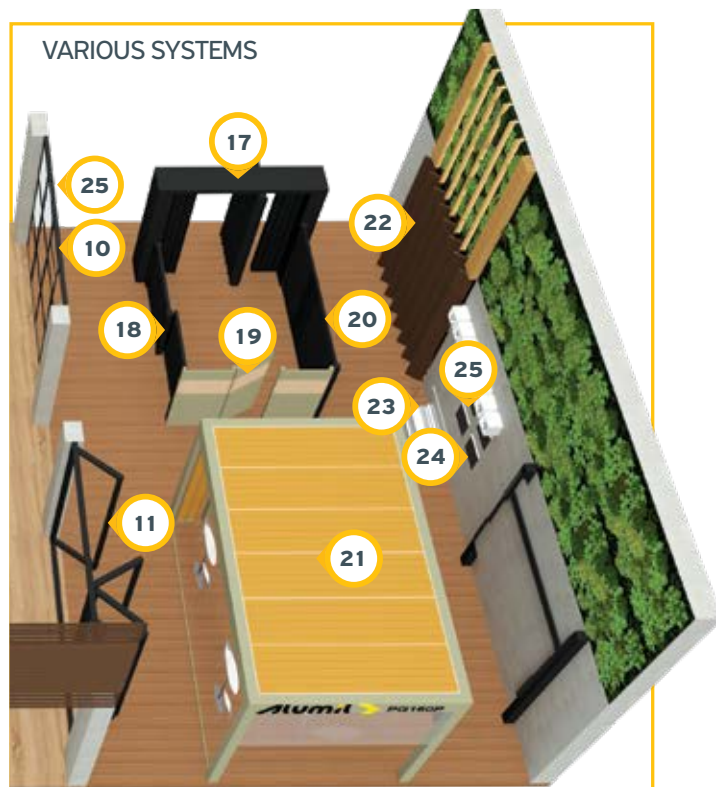
SLIDING SYSTEMS



HINGED SYSTEMS



VARIOUS SYSTEMS



Contents

No	System	Type	Page
01	SMARTIA M35	CURTAIN WALL	8
02	SMARTIA M630 PHOS	SLIDING SYSTEM	9
03	SUPREME SF85	FOLDING DOOR	10
04	SUPREME S650 ECLIPSE	SLIDING SYSTEM	11
05	SUPREME S700 ECLIPSE	SLIDING SYSTEM	12
06	SUPREME S650 E-MOTION	SLIDING SYSTEM	13
07	SUPREME S650 PHOS	SLIDING SYSTEM	14
08	SUPREME S500 ECLIPSE	SLIDING SYSTEM	15
09	SUPREME S500 ECLIPSE	SLIDING SYSTEM	16
10	SMARTIA M35 URBAN	CURTAIN WALL	17
11	SMARTIA MF65	FOLDING DOOR	18
12	SMARTIA S67 URBAN	HINGED SYSTEM	19
13	SUPREME S77 PHOS	HINGED SYSTEM	20
14	SMARTIA M84FR	HINGED SYSTEM	21
15	SMARTIA M7FR	CURTAIN WALL	22
16	SMARTIA P400	PARTITION	23

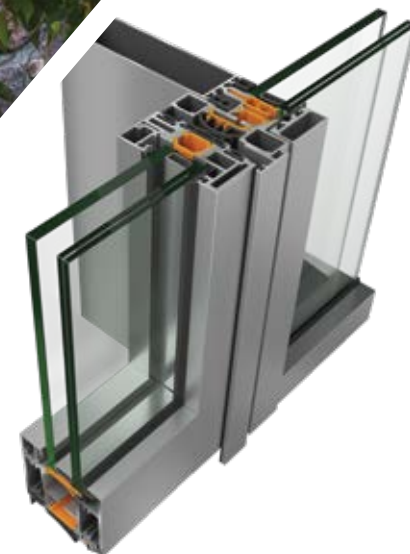
No	System	Type	Page
17	SMARTIA FC80	FENCES & GATES	24
18	SMARTIA FC80	FENCES & GATES	25
19	SMARTIA FC60	FENCES & GATES	26
20	SMARTIA FC10	FENCES & GATES	27
21	SMARTIA PG160P	PERGOLA	28
21	PERGOLA EQUIPMENT	ZIP SCREEN	29
21	PERGOLA EQUIPMENT	GLASS SLIDING	30
21	PERGOLA EQUIPMENT	SLIDING SHUTTER	31
21	PERGOLA EQUIPMENT	LED LIGHTING	32
22	SMARTIA WOODALUX	CLADDING	37
23	SMARTIA M8200	RAILINGS	34
24	SMARTIA M13800 / M13700	ROLLING SHUTTERS	35
25	SMARTIA ZIP SCREENS	SHADING, FLYSCREENS	36
26	SMARTIA BARCODE	CLADDING	37
27	SMARTIA WOODEE	CLADDING, DECK	38

Alumil





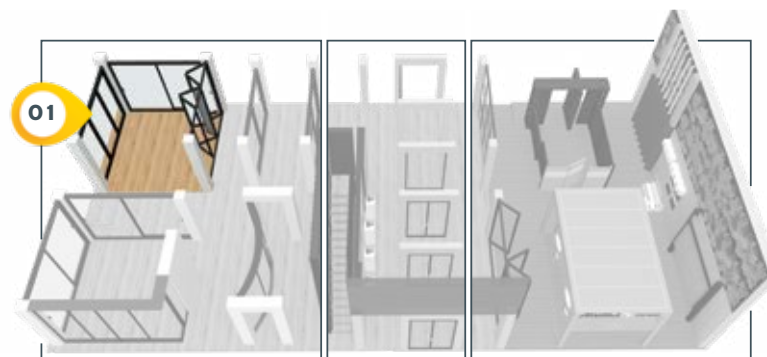
Booth
338



M35 Curtain Wall system with integrated SD77 PIVOT

It is worth noticing:

- The minimal look of the Curtain Wall thanks to the 35 mm visible aluminium.
- The sophisticated design of the SD77 Pivot that “hides” the door frame into the Curtain Wall column, minimizing the visible aluminium to 102 mm.
- The hidden Pivot mechanism which is adjustable both in height and width.
- The fact that no floor shaping is needed for the installation of the SD77 Pivot mechanism.



Alumil SMARTIA M630 PHOS

02



Sliding thermally insulated system Double sash / Flyscreen

It is worth noticing:

- The minimal design with concealed profiles, both at the top and at the side parts of the frame.
- The narrow interlocking profile of only 44 mm.
- The ideal for renovations flat low threshold of 32 mm high, for easy and safe access.
- The minimal design of the patented handle, combined with the sash locking mechanism.
- The concealed horizontal flyscreen integrated into the wall, that can be opened at the desired position, ensuring excellent mosquito protection even for wide spans.



☐ LIKE



Alumil SUPREME SF85

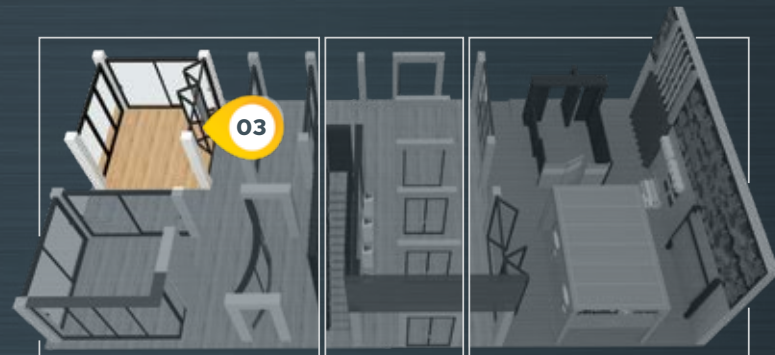
03



Thermally insulated folding door system Four vents / Structural (4+0)

It is worth noticing:

- The uniquely low sightlines of 105 mm (sash to sash) and the overall minimal design (concealed track).
- The extremely large spans supported by the system in terms of vent height (4 m) and width (1.5 m).
- The excellent performance of the system in terms of thermal insulation (from 1.0 W/m²K), air permeability, watertightness and wind load resistance.
- The possibility of installing a structural sash for a unique result.
- The features that guarantee high levels of burglar-protection (quadruple locking latches, 5-point lock, anti-lift mechanism).



LIKE



Sliding thermally insulated system Double sash / Flyscreen

It is worth noticing:

- The very narrow interlocking profile of only 25 mm.
- The minimal design with concealed profiles, both at the top and at the side parts of the frame.
- The continuity of the floor between the interior and exterior environment, which offers high aesthetics, flat surface and safe access.
- The unique full height handle with integrated lock, combined with the concealed locking mechanism of certified anti-burglary protection.
- The automated vertical flyscreen that operates with remote control.
- The ZIP technology at the sides of the flyscreen, which ensures the perfect stretch of the flyscreen fiber even in wide spans.

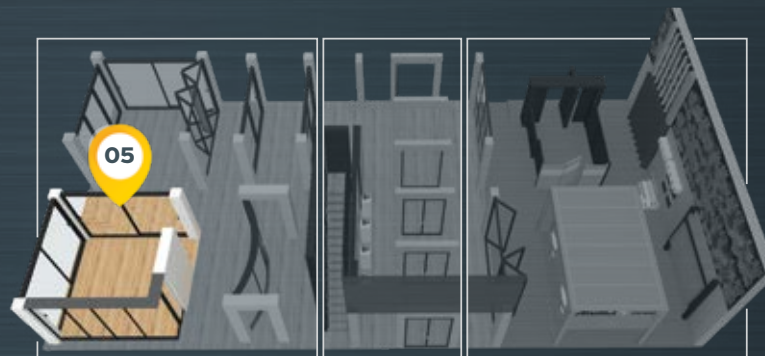




Lift & Slide thermally insulated system Double sash

It is worth noticing:

- The easy movement of the sashes with the use of a Lift & Slide mechanism, suitable for very large and heavy sashes up to 600 Kg.
- The narrow interlocking profile of only 47 mm.
- The continuity of the floor between the interior and exterior environment, which offers high aesthetics, flat surface and safe access.
- The flat locking points that do not protrude from the frame, for a unique design and maximum safety.
- The robust profiles of the system that contribute to excellent performance in terms of thermal insulation (from 1.0 W/m²K), air permeability, watertightness and wind load resistance.



Alumil SUPREME S650 e-MOTION

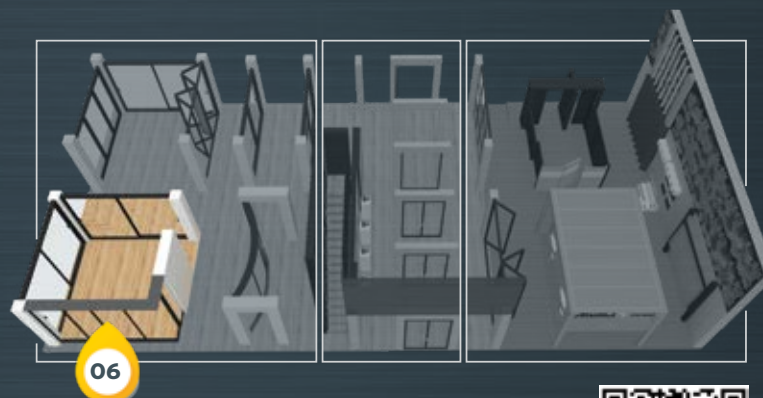
06



Sliding thermally insulated system Corner typology Double sash / Single pocket sash

It is worth noticing:

- The automated motion of the sashes through remote control, for maximum ease of use.
- The narrow meeting point of the corner sashes, with no mullion at the open position, for maximum visibility.
- The hidden into the wall sash that allows maximum utilization of the space and an uninterrupted view.
- The minimal design with concealed profiles both at the top and at the side parts of the frame.
- The continuity of the floor between the interior and exterior environment, which offers high aesthetics, flat surface and safe access.



LIKE



Alumil SUPREME S650 PHOS

07



Sliding thermally insulated system Fixed / Sash / Fixed

It is worth noticing:

- The curved sashes of a maximum weight of up to 1000 Kg.
- The ultimate symmetrical appearance with just 25 mm visible aluminium at all vertical columns (interlocking & locking sides).
- The minimal handle on the narrow interlocking profile of 25 mm that ensures the safe locking of the sash.
- The minimal design with concealed profiles, both at the top and at the side parts of the frame.
- The ideal for renovations and replacements low track of 35 mm height that ensures easy and safe access.



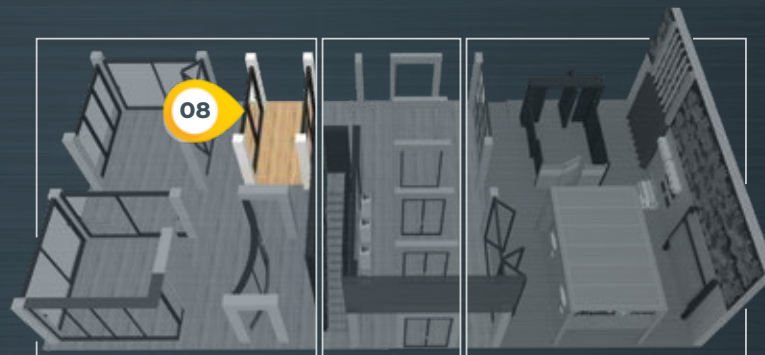
LIKE



Sliding thermally insulated system Double sash

It is worth noticing:

- The minimal aesthetics, with a symmetrically visible aluminium frame perimetrically of the sash.
- The very narrow interlocking profile of only 25 mm.
- The continuity of the ceiling between the interior and the exterior environment, that follows the aesthetics of the bottom track.
- The continuity of the floor between the interior and exterior environment, which offers high aesthetics, flat surface and safe access.
- The concealed profiles at the side parts of the frame, with visible only the tracks of the moving sashes.
- The continuous handle that covers the full height of the sash and the minimal integrated locking mechanism.



Alumil > SUPREME S500 ECLIPSE

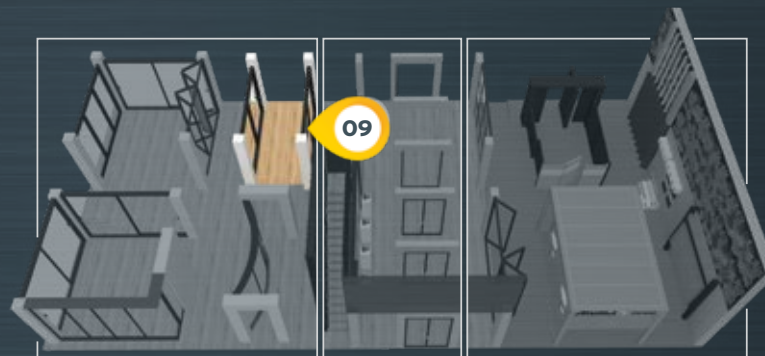
09



Sliding thermally insulated system Double sash / Flyscreen

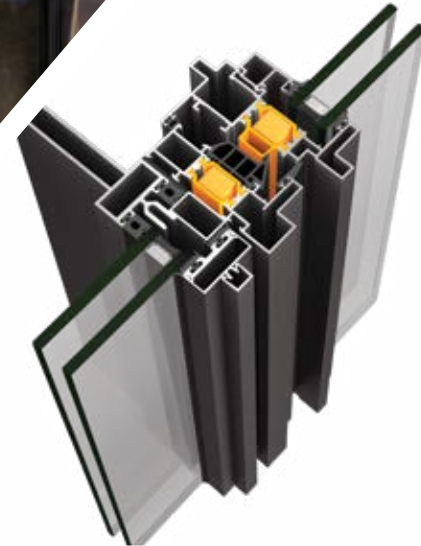
It is worth noticing:

- The minimal aesthetics, with a symmetrically visible aluminium frame perimetrically of the sash.
- The very narrow interlocking profile of only 25 mm.
- The continuity of the floor between the interior and exterior environment, which offers high aesthetics, flat surface and safe access.
- The continuous handle that covers the full height of the sash and the minimal integrated locking mechanism.
- The concealed horizontal flyscreen integrated into the wall, that can be opened at the desired position, ensuring excellent mosquito protection even for wide spans.



Alumil SMARTIA M35 URBAN

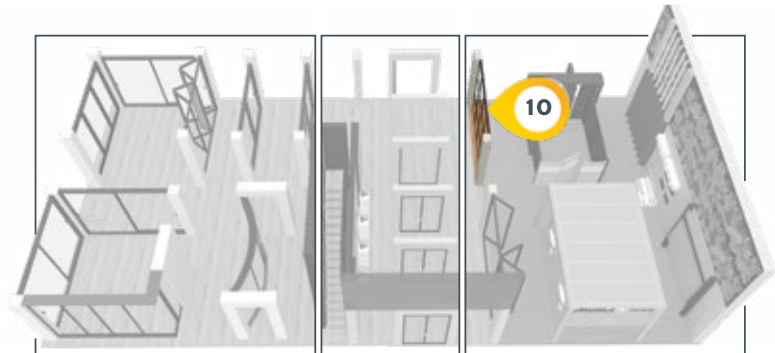
10



M35 URBAN Curtain Wall system with integrated S67 URBAN and SD77 Pivot

It is worth noticing:

- The minimal look of the M35 URBAN, thanks to the 35 mm visible aluminium that offers industrial aesthetics.
- The sophisticated design that allows the integration of hinged and entrance door systems into the Curtain Wall, providing a reduced visible aluminium face width (122 mm and 82 mm respectively).
- The industrial-look S67 URBAN, with a lower threshold of 21 mm for unobstructed access to children and people with disabilities.
- The industrial-look Pivot entrance door SD77 with concealed frame, hidden lock and special profile as a handle.
- The Pivot mechanism that allows the construction of large entrance doors, adjustable in both height and width, without requiring any floor shaping.
- The innovation of manufacturing pivot doors with fanlight, which was not possible until today.



Alumil SMARTIA MF65

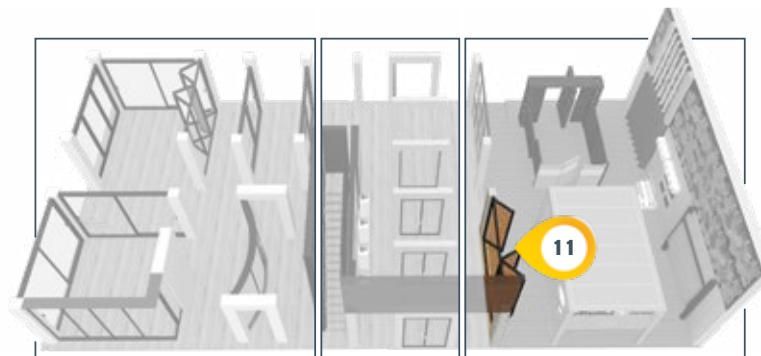
11



Thermally insulated folding door system Four vents (3+door)

It is worth noticing:

- The particularly minimal design with slim aluminium sight lines (88 mm sash to sash).
- The very large spans in terms of vent width (up to 1.3m) and height (up to 3 m).
- The excellent performance in terms of thermal insulation, watertightness, air permeability and wind load resistance.
- The possibility of adjusting most of the accessories to allow easy and proper installation.
- The long-lasting smooth and flawless operation.



☐ LIKE

Alumil SMARTIA S67 URBAN

12



Hinged thermally insulated system Slim double sash entrance door

It is worth noticing:

- The ultimate sense of industrial style created by the strong protrusions of the profiles both externally and internally.
- Minimal aluminium face width of 50mm which enhances natural lighting and visibility.
- Narrow sightline of adjoining section at 61mm.
- The ability to fabricate complicated constructions, such as doors with fixed partitions or window muntins, which contributes to a total aesthetic upgrade of living spaces.
- Sophisticated Integrated external handle.

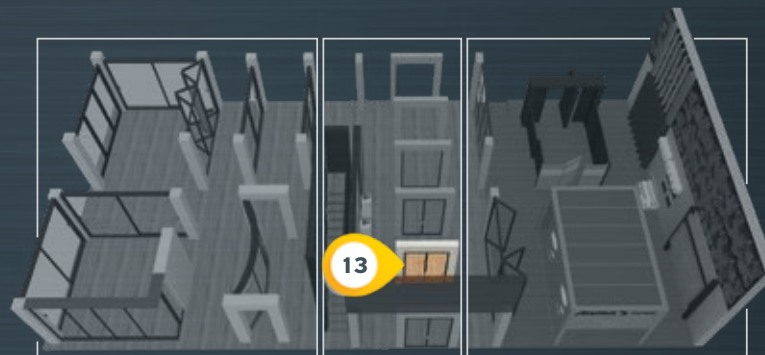




Hinged thermally insulated system with concealed sash Double Tilt & Turn

It is worth noticing:

- The advanced design of the system that "hides" the sash inside the frame giving it an elegant and modern look.
- The visible aluminium face width of only 67 mm that maximizes the glass panel surface offering unobstructed views and increased natural lighting.
- The innovative design of a narrow 69 mm central mullion profile, which enhances the minimal look and gives special aesthetics to the window.
- The elegant metal rosette handle, positioned in the centre of the window.
- The harmonious combination of aesthetics and high thermal insulation performance. The low 13 mm threshold that ensures easy access for children and people with disabilities.
- The concealed hinges that, in combination with the reduced visible aluminium face width and the narrow profile of the central mullion, top off the minimal look of the frame.



Alumil SMARTIA M84FR

14

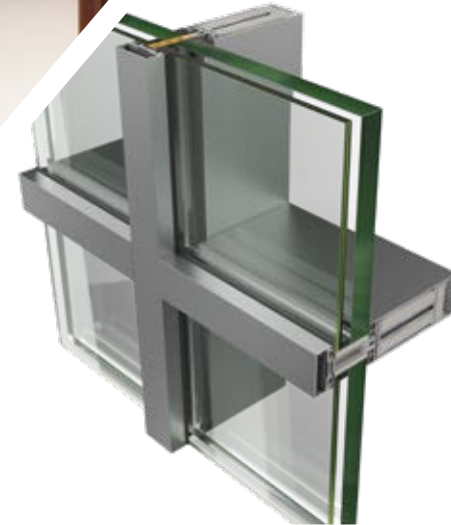


Fire Rated hinged thermally insulated system Single sash with side fixed panel

It is worth noticing:

- The EI60-certified fire resistance.
- The cooling material installed in the frame and sash chambers.
- The intumescent tapes in frame and sash.
- The 140 mm visible aluminium face width.
- The panic bar that offers a safe exit in case of fire.
- The door closer mechanism that holds, as an additional function, the door open in case of fire.

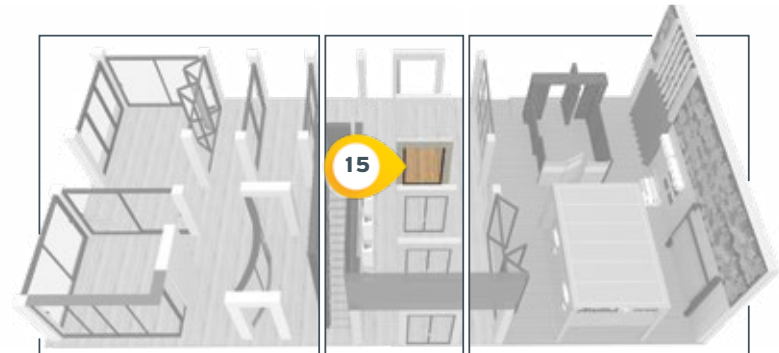




Curtain Wall thermally insulated system

It is worth noticing:

- The EI60 certified fire resistance.
- The cooling material installed in both transom and mullion chambers.
- The intumescent tapes placed in the sides of isolator and glazing holder.
- The steel reinforcement profile that contributes to fire resistance of Curtain Wall.
- The aluminium reinforcement profile necessary for achieving 60 minutes fire protection.

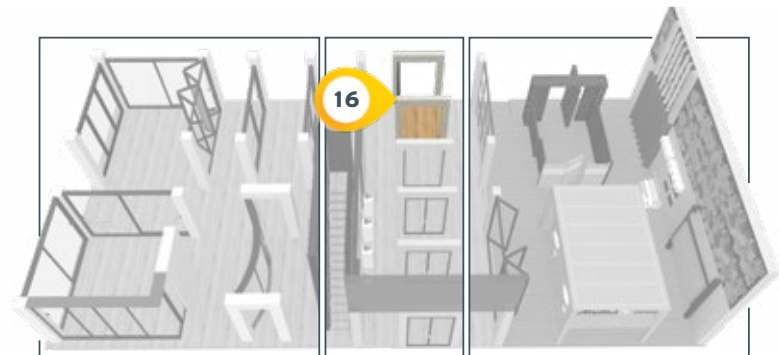




Interior partitioning system

It is worth noticing:

- The minimal aesthetics in alignment with the trends of modern interior design.
- The sliding door possibility, which is more ideal for domestic applications.
- The special design which allows easy installation even after plasterboard placement thus, easy replacement too.
- The option of applying decorative profiles on the glass panel to create stylish, bespoke grids.

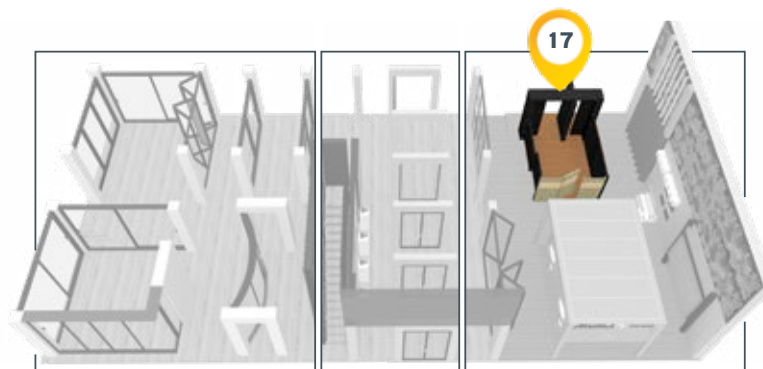




Aluminium hinged gates with "barcode" louvers

It is worth noticing:

- The exceptional "barcode" design at both sides, guaranteed to make an impact and catch the eye.
- The concealed pivot hinges for stunning appearance, while ensuring smooth operation.
- The limitless customization, thanks to the LED lights and Woodalux® bars integration.
- The great dimensions (up to 1.5 m width / 3.0 m height) which makes them ideal for grand entrances.
- The versatility and the solutions of SMARTIA FC80 overall.

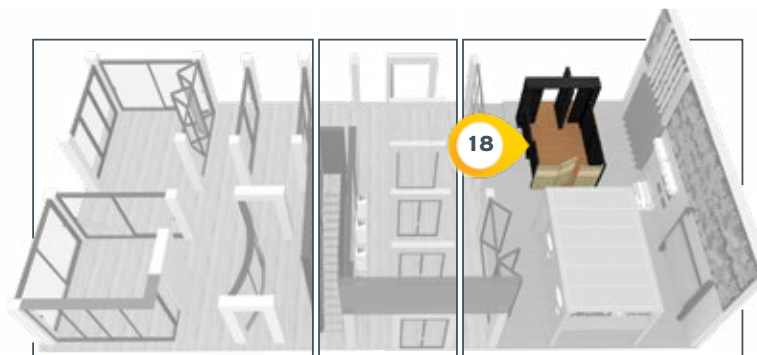




Aluminium sliding gates with inlaid louvers

It is worth noticing:

- The flawless operation of the sliding gate and the ability for large dimensions (6 m).
- The concealed drive mechanism thanks to the special cover profile at the top and bottom.
- The 120 mm mullions which replace the corresponding concrete ones for a 100% aluminium effect.
- The special inlaid "barcode" profile which can be combined with corresponding wall cladding profiles.

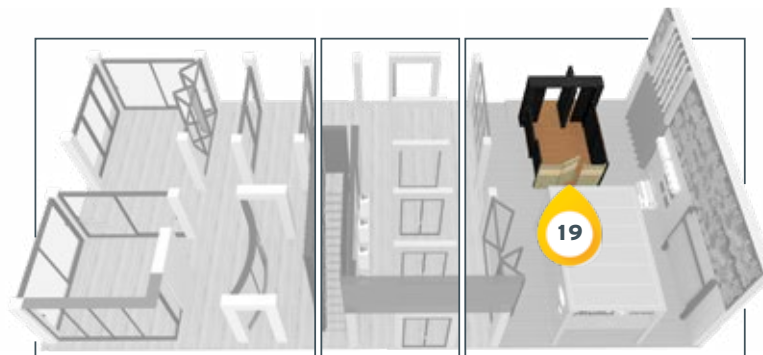




Aluminium fences & gates with attached louvers

It is worth noticing:

- The continuous, linear aesthetics that upgrades buildings and surrounding spaces.
- The uniformity between fence, gate and pergola that showcase ALUMIL Outdoor holistic approach.
- The aluminium side caps of the louvers (patented innovation) without visible fixation points.
- The combination of aluminium and Woodalux® louvers
- The complete functional solutions offered by the system (sliding, single-sash, double-sash, fence), in normal and large dimensions.

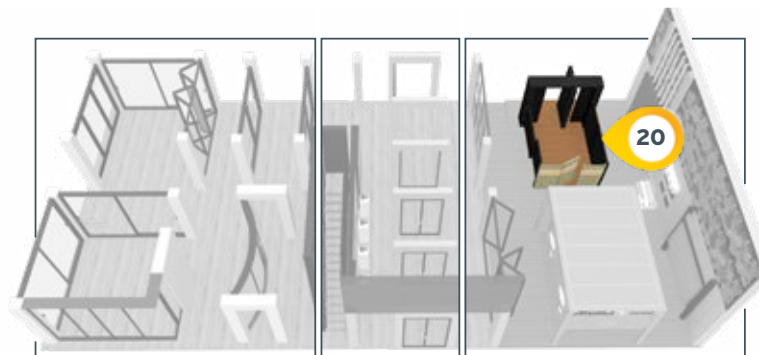




Aluminium fences with vertical louvers

It is worth noticing:

- The minimal aesthetics thanks to the vertical louver placement.
- The variety of aluminium & Woodalux® louvers, i.e. rectangles, Barcode and "Z" shape for privacy.
- The simple, smart and effective way of supporting (top and bottom).
- That it successfully replaces ordinary steel structures, overcoming rust and maintenance problems.
- The option of allowing or preventing inward visibility.



Alumil SMARTIA

PG 1 60P Santorini

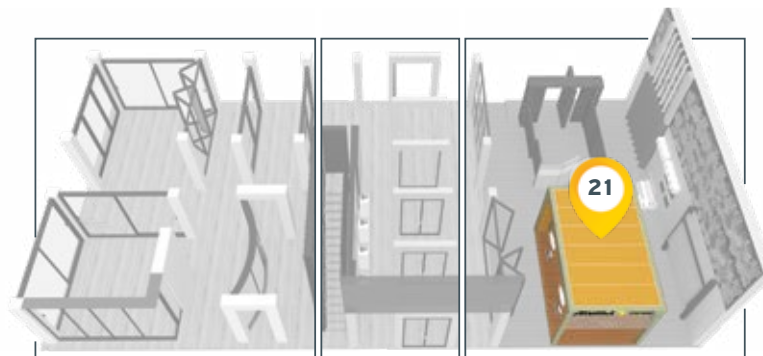
21



Aluminium pergolas with bioclimatic design (160 mm post)

It is worth noticing:

- The top robustness, which allows very large dimensions (7.5x7.5m) and ensures great resistance against harsh weather conditions, such as heavy snow (up to 300 Kg/sqm).
- The unique way of assembly thanks to which impressive resistance to static and air dynamic loads is achieved.
- The incomparable aesthetics with the coplanar surfaces, the concealed connection points, the hidden and almost noiseless motor, etc.
- Incomparable levels of waterproofing and advanced water drainage system (Ø75).
- The extra equipment, which can be fully integrated in our pergolas.



☐ LIKE

Alumil > Bioclimatic Pergolas EQUIPMENT

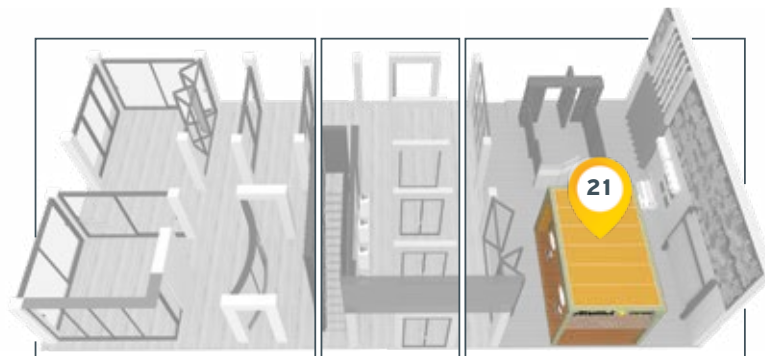
21



Vertical shading screen with ZIP technology

It is worth noticing:

- The minimal design and its unnoticeable embedding in the pergola structure.
- The ability to cover very large spans (up to 6 m) without deformations.
- Its long-lasting and flawless automated operation.
- The top quality, the wide range and the perfect fit of the shading fabrics.



Alumil > Bioclimatic Pergolas EQUIPMENT

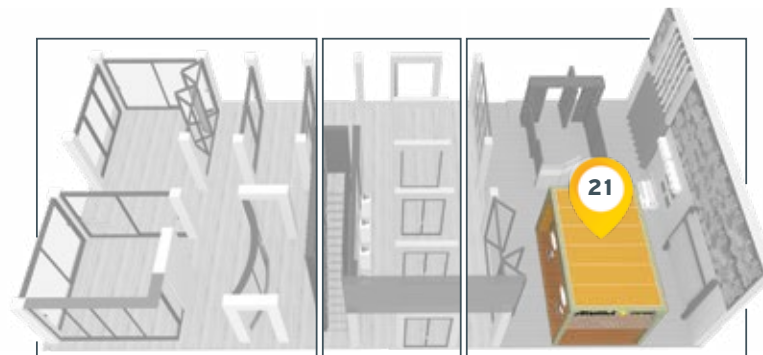
21



Glass sliding system / ZIP screen integrated

It is worth noticing:

- The simple aesthetics with fine lines and coplanar surfaces.
- The smooth and easy operation of the system, combined with its simplicity and the large spans it covers.
- The emphasis on detail for maximum waterproofing and "bioclimatic" result.
- The possibility to combine Glass Sliding with Zip Screen on the same side.



Alumil Bioclimatic Pergolas EQUIPMENT

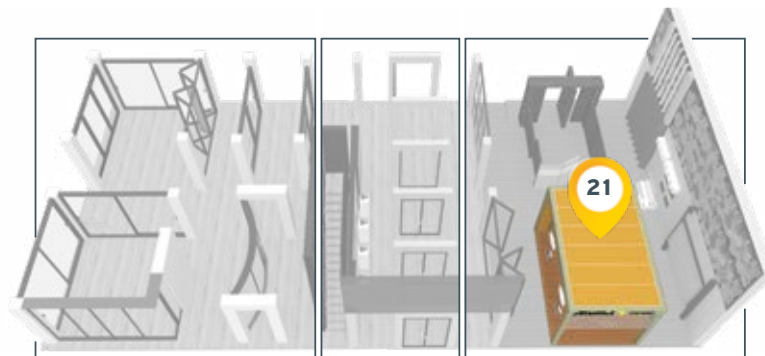
21



Sliding shading shutters

It is worth noticing:

- The various decorative possibilities available, such as aluminium or Woodalux® blades , shading fabric.
- The additional vertical shading it can offer, which is removable from the field of vision when not required.
- The very easy operation and its resistance to strong wind pressures.
- Its minimal design and concealed connection points.



Alumil > Bioclimatic Pergolas EQUIPMENT

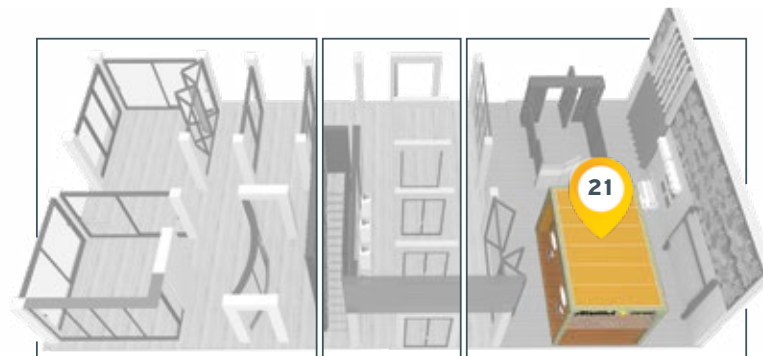
21



LED lighting solutions

It is worth noticing:

- The multiple options of visible or concealed lighting, i.e. on transoms, louvers and posts.
- The minimal design thanks to the coplanar embedding of the lighting components.
- The excellent result thanks to the warm, continuous, dimmer lighting.
- The quality and safety of the selected materials (IP65 waterproofing, 3200K warm white, 24V 9.6 W/m, 1050 lumens/m, 98 LED/m).

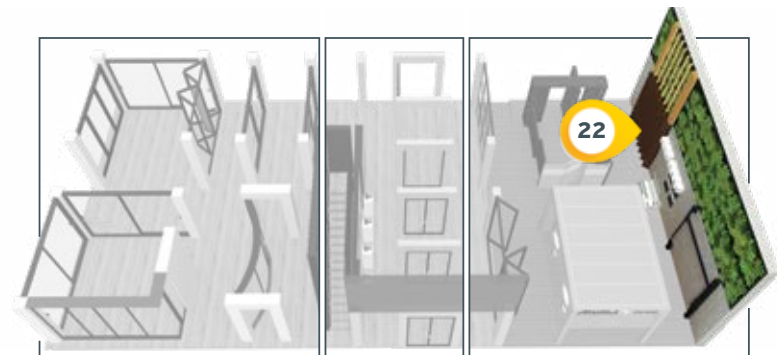




Rotating shading system with Woodalux®

It is worth noticing:

- The robust rotating construction with rectangular shading louvers that can be placed vertically or horizontally.
- The special 45x300 mm louver which is available, like the rest of the Woodalux® profiles, in 9 different shades.
- Woodalux® itself, a unique architectural tool with wide use (projected shading systems and claddings, pergola louvers, fences, shutters, etc.).
- The comparative advantages of the material over wood and aluminium (e.g. mechanical strength, durability, natural look, etc.).

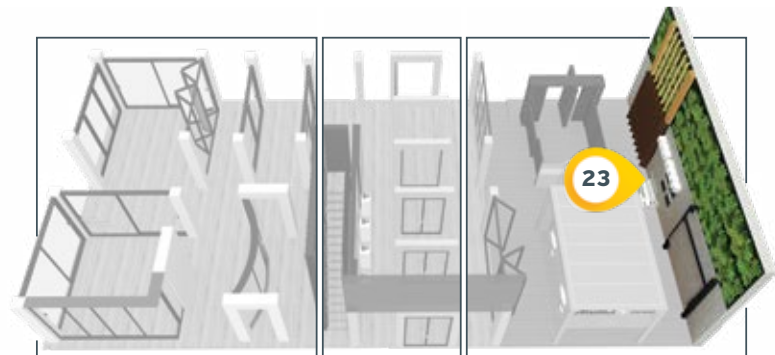




Glass railings without posts

It is worth noticing:

- The different ways of installation (side-mounted, embedded, on-floor) depending on the needs of each project.
- The wide variety of solutions with more than 10 bases and the possibility for different glazing thickness (5+5, 6+6, 8+8, 10+10, 12+12 mm).
- Special bases, like M8219, which can be placed on the rim of the balcony and allow very large heights (1.8 m).
- The extreme robustness and the high safety levels, accompanied by plethora of certificates.



Alumil SMARTIA

M13800 / M13700

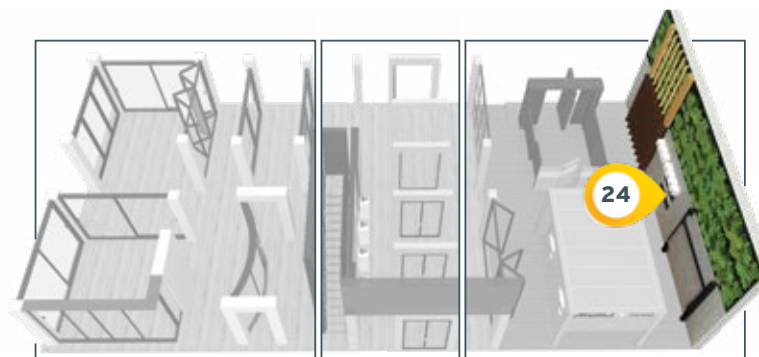
24



Thermally insulated rolling shutters

It is worth noticing:

- The rolling shutter for the very large spans (up to 7m width) thanks to the special slat with the large perforation (ventilation, brightness).
- The wide range of solutions and boxes (thermally insulated or not, top-mounted or external, flat or curved), and in many dimensions.
- The variety in aluminium slats, especially the ones with the large perforation, for design, natural ventilation and lighting.
- High levels of thermal insulation ($0.95 \text{ W/m}^2\text{K}$).



☐ LIKE



Alumil SMARTIA ZIP Screens

25



Automated ZIP Screens

It is worth noticing:

- The variety of boxes in several dimensions (70, 100, 120 and 160 mm) to cover from small up to very large spans (up to 6m).
- The possibility for visible or concealed placement.
- The possibility of using shading or flyscreen fabrics, with corresponding rolling speed.
- The minimal design and the quality of the construction, which guarantees trouble-free operation with constantly stretched fabric.



Alumil SMARTIA

Barcode Cladding

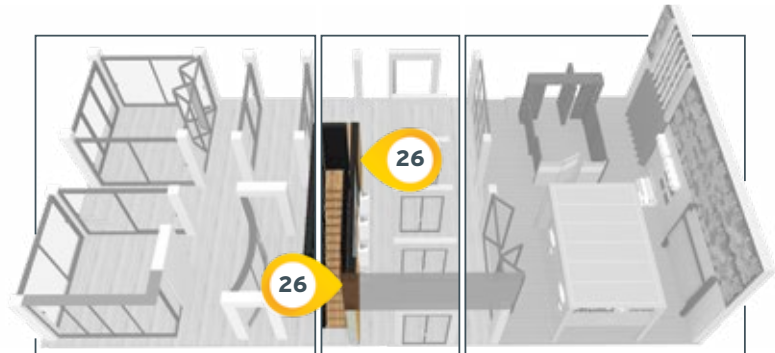
26



Cladding system with aluminium profile

It is worth noticing:

- This unique design proposal that is a valuable architectural tool for covering interior or exterior surfaces, ceilings, fences, etc.
- The wide range of profiles and their combination with Woodalux®, LED lighting and perforation.
- The supporting system with numerous adjustable brackets, which allows the installation of thermally insulated walls (ETICS).
- The brackets with the special clip for quick installation and the plastic pad to avoid thermal losses.
- The optimal waterproofing with integrated windows, doors and facades.



☐ LIKE



Premium wood composite planks for fixed cladding and adjustable shading

It is worth noticing:

- The rotating shading solution integrated at the same level as the fixed cladding application.
- The natural wood feeling that all the four available surfaces provide (here Amazon).
- The premium and high-resistance material accompanied with a 25-year warranty.
- The wide application in wall cladding, solar shading, fencing and decking, all available in a palette of 9 colors.



Alumil



Discover the world of **ALUMIL Connect**, the **innovative digital services ecosystem**, designed to facilitate and upgrade the work of each of our partners. ALUMIL Connect includes all of ALUMIL's online tools, which have been developed to become the best ally of our network of fabricators, contributing to the completion of quality constructions and the delivery of competitive products.

Alumil Connect app

ALUMIL Connect App is the central library of knowledge regarding the company's products. Within the application our partners can find:

- Detailed information on profiles' components and systems' technical characteristics.
- Latest versions of the technical catalogues (PRE-Qs).
- Systems' fabrication manuals.
- Educational presentations and product videos.

- Systems' certificates of performance.
- Brochures and promotional material.
- Corporate presentations.
- CAD & BIM files.
- Drawings of profiles and accessories.

ALUMIL' s advanced application is a useful tool for any aluminium fabricator!



Alumil Build

We created ALUMIL Build, our new online software for materials and cost calculation related to the fabrication of aluminium frames, in order to facilitate the daily work of our partners. By filling in certain fields, each of our partners has a complete picture of his construction, as well as the offer that they are going to give to the customer.

All that is required is the registration of the data for the new construction:

- series and typology of the aluminium system
- their profile and color
- glazing thickness
- mechanism materials

It is also possible to adjust the additional costs, man-hours, profit percentage and possible discounts. The fabricators have at their disposal the Cutting Optimization, the detailed Material Report as well as the final Offer, which they can send directly to the customer. And the best part? Alumil Build is completely free!

The advanced, digital world of ALUMIL Build is waiting to be explored!



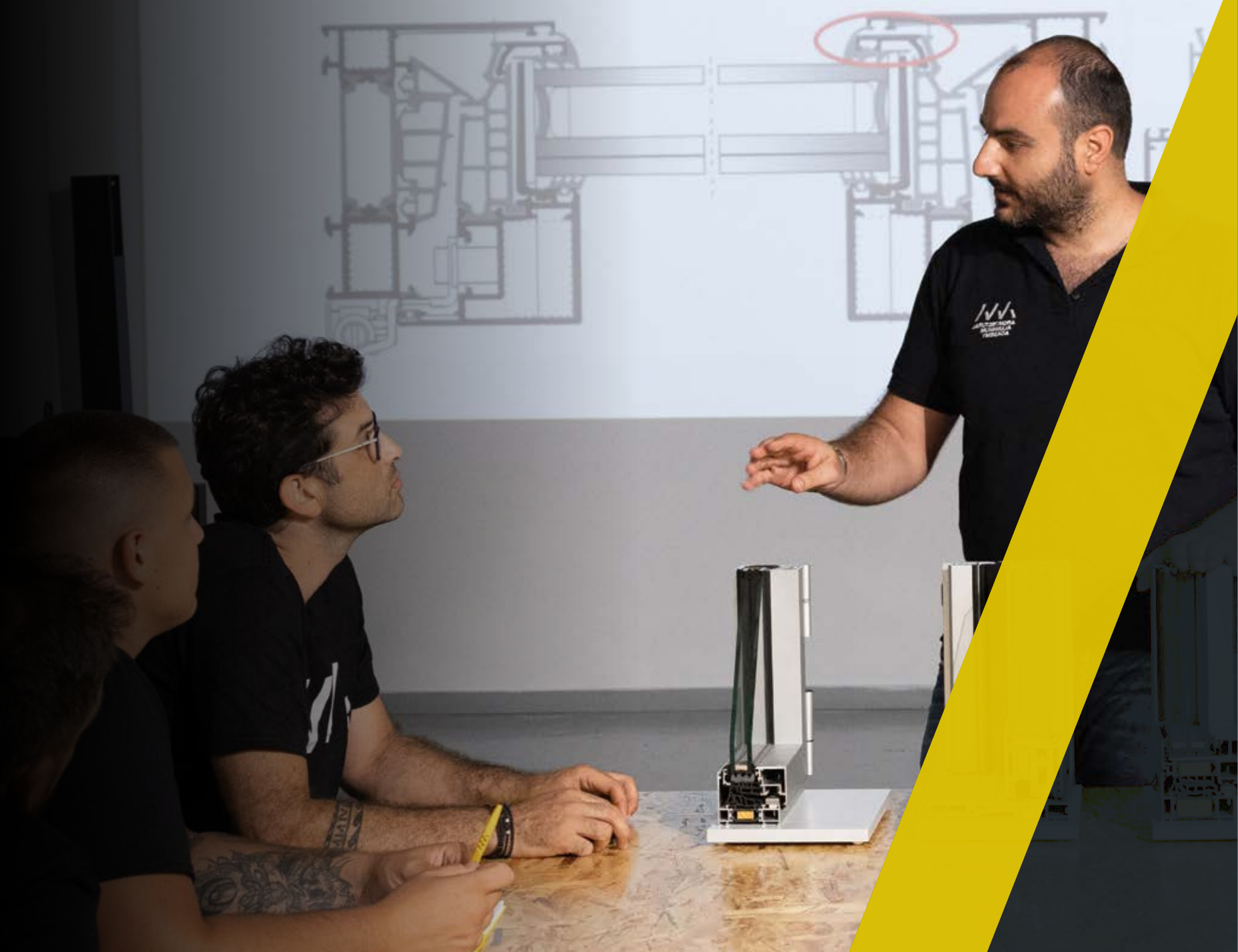
The top B2B e-shop for aluminium fabricators. Here, our partners find the profile and accessories codes as well as their stocks, proceeding safely and confidently with their orders.

At My ALUMIL, the fabricators can check at any time the list of their orders and their status, while through their accounts they have access to announcements and technical news.

The value of the platform lies in the fact that it is the best ordering tool for every ALUMIL partner. A digital common ground, which acts as a daily point of reference.

The one-stop shop for every new project!







**ARCHITECTURAL
ALUMINIUM
ACADEMY**

A center for innovation and skills development for the aluminium construction industry.

With facilities in Athens and Thessaloniki and activities throughout Greece and abroad, Architectural Aluminium Academy is a **research, education and consultancy center, with a vision for the continuous development of professionals and businesses in the field of architectural aluminium systems.**

The organization was created on the initiative of ALUMIL and in collaboration with leading Greek academic institutions (Aristotle University of Thessaloniki and University of Macedonia), high-tech companies (D-cube, Atlantis Engineering) and successful companies in the industry (GLM, Alutrade).

Discover the services of Architectural Aluminium Academy

Business Consulting

It is implemented through specialized interventions, which improve the organization, operation, performance and strategy of a business, enhancing its competitiveness and increasing its profitability. A personalized service that gives practical, realistic and reliable solutions, tailored to the needs of each business. It is offered throughout the year, at a place and time determined by each customer.

Technical Support

Personalized service, which combines theoretical with technical training, offering support and expertise in all ALUMIL series of architectural systems, both to individual professionals and to companies in the sector. It is offered throughout the year, at a place and time determined by each customer.

Professional Training

Two comprehensive training programmes that take advantage of the prospects offered by the industry, ensuring the professional future of both fabricators and young people interested in joining the industry.

- **Aluminium Frame Technician:** Complete program including 600 hours of theoretical and laboratory training, through which the trainees acquire the necessary knowledge to manufacture, install, maintain and repair aluminium systems.
- **Preparation of Aluminium Fabricator Certification:** A 50-hour fast-track training program that is implemented under the auspices of the Panhellenic Federation of Aluminum-Iron Manufacturers (POVAS), providing fabricators with all the necessary knowledge and skills to meet the new challenges and needs of the industry but also to succeed in the certification exams by a third independent party.

Find out more about Architectural Aluminium Academy: <https://aluminiumacademy.com/>



**HEAD OFFICES
& SHOWROOM - THESSALONIKI**

GOGOUSI 8, EFKARPIA
THESSALONIKI - GR 564 29
TEL.: +30 2313 011000
E-MAIL: info@alumil.com

OFFICES & SHOWROOM - ATHENS

TATOIOU AVENUE 67, ACHARNES
ATHENS - GR 136 77
TEL.: +30 210 6298100
E-MAIL: athina@alumil.com

HEADQUARTERS - FACTORY

KILKIS INDUSTRIAL AREA
KILKIS - GR 61100
TEL.: +30 23410 79300
E-MAIL: info@alumil.com



www.alumil.com

www.alumil.com

alumil
Building excellence every day